



# UbiHomeServer Front-end to the Ubiquitous Home Environment

12th FRUCT conference 2012

Mobile Healthcare, Early Diagnostics and Fitness II Section  
November 09, 2012

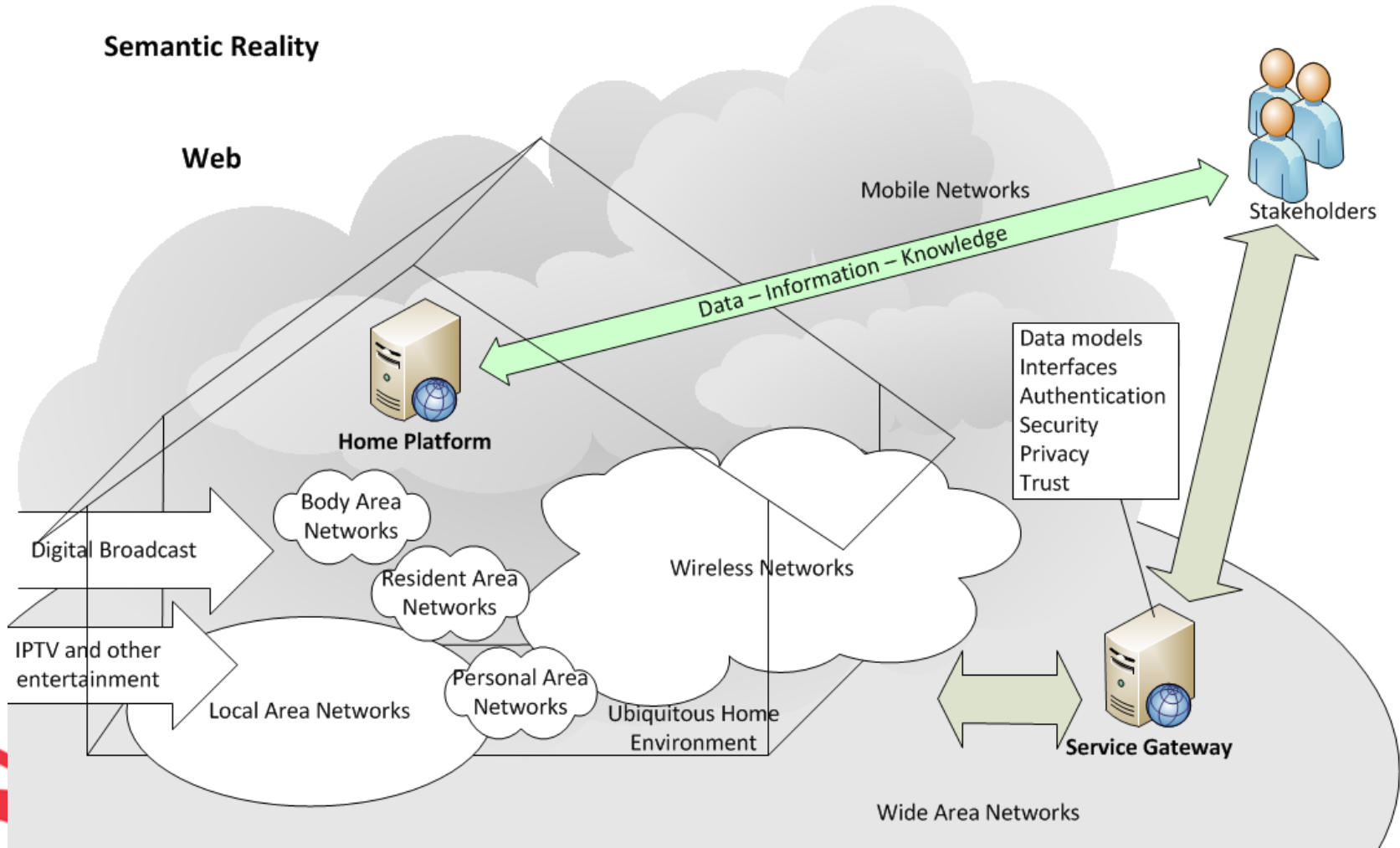
**Vadym Kramar**, Markku Korhonen, Yury Sergeev  
@oamk.fi

Oulu University of Applied Sciences, School of Engineering,  
Pehr Brahe Center for Industrial and Services ICT (PBOL)

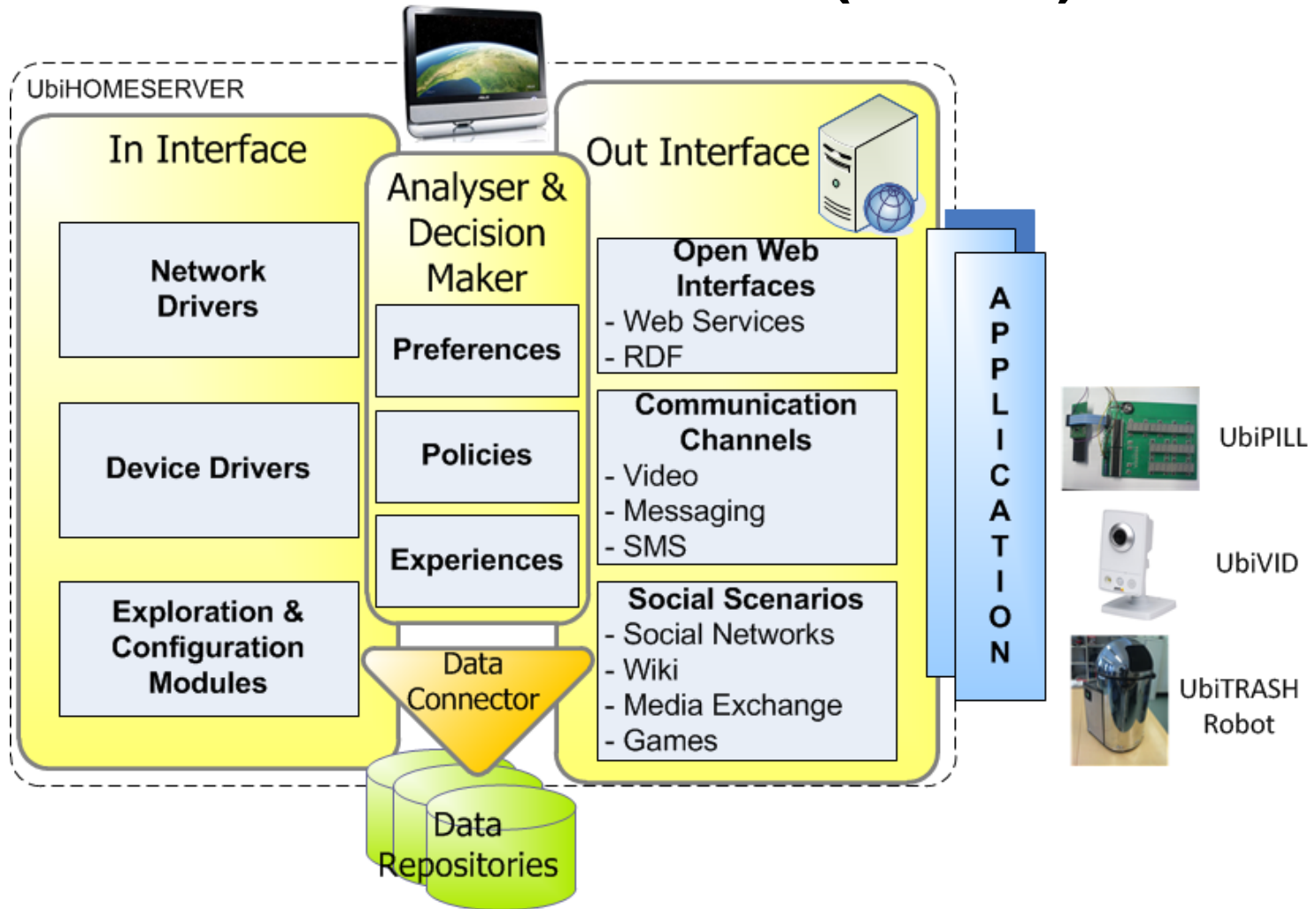


# Ubiquitous Home Environment

Semantic Reality



# UbiHomeServer (v.1.0)



# User Terminal Devices



TV



Touch-screen



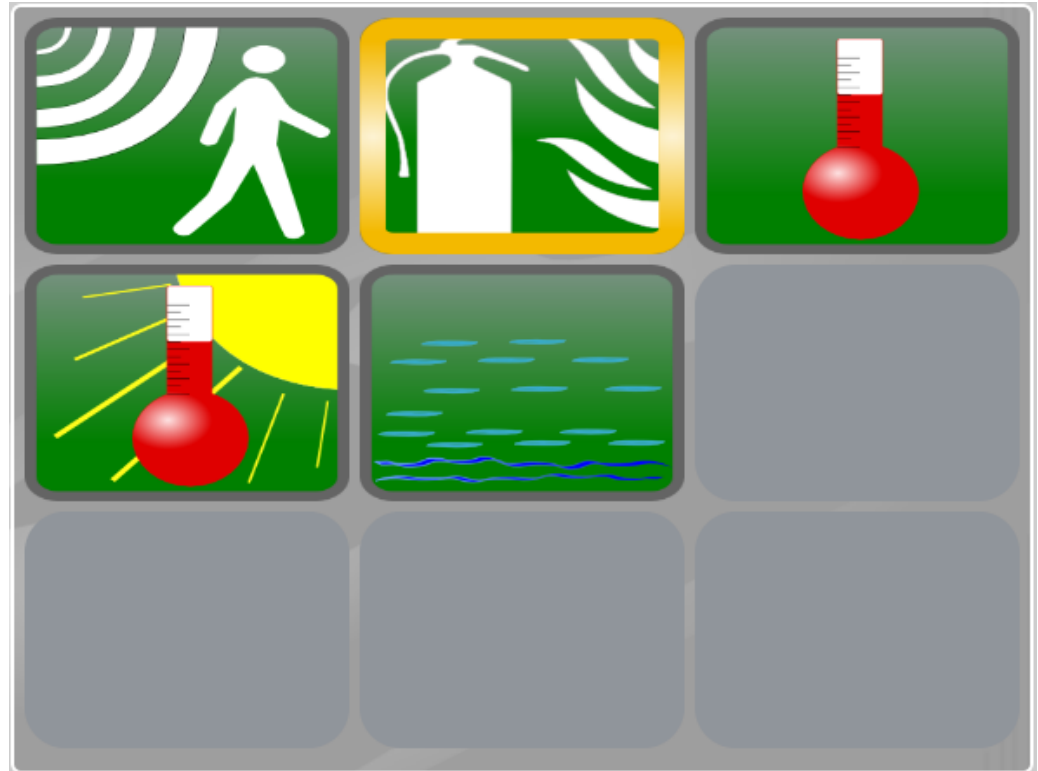
Mobile



# GUI Fragment (v. 1.0)

Modalities:

- Textual
- Symbolic
- Colour
- Sound
- Voice
- Visual

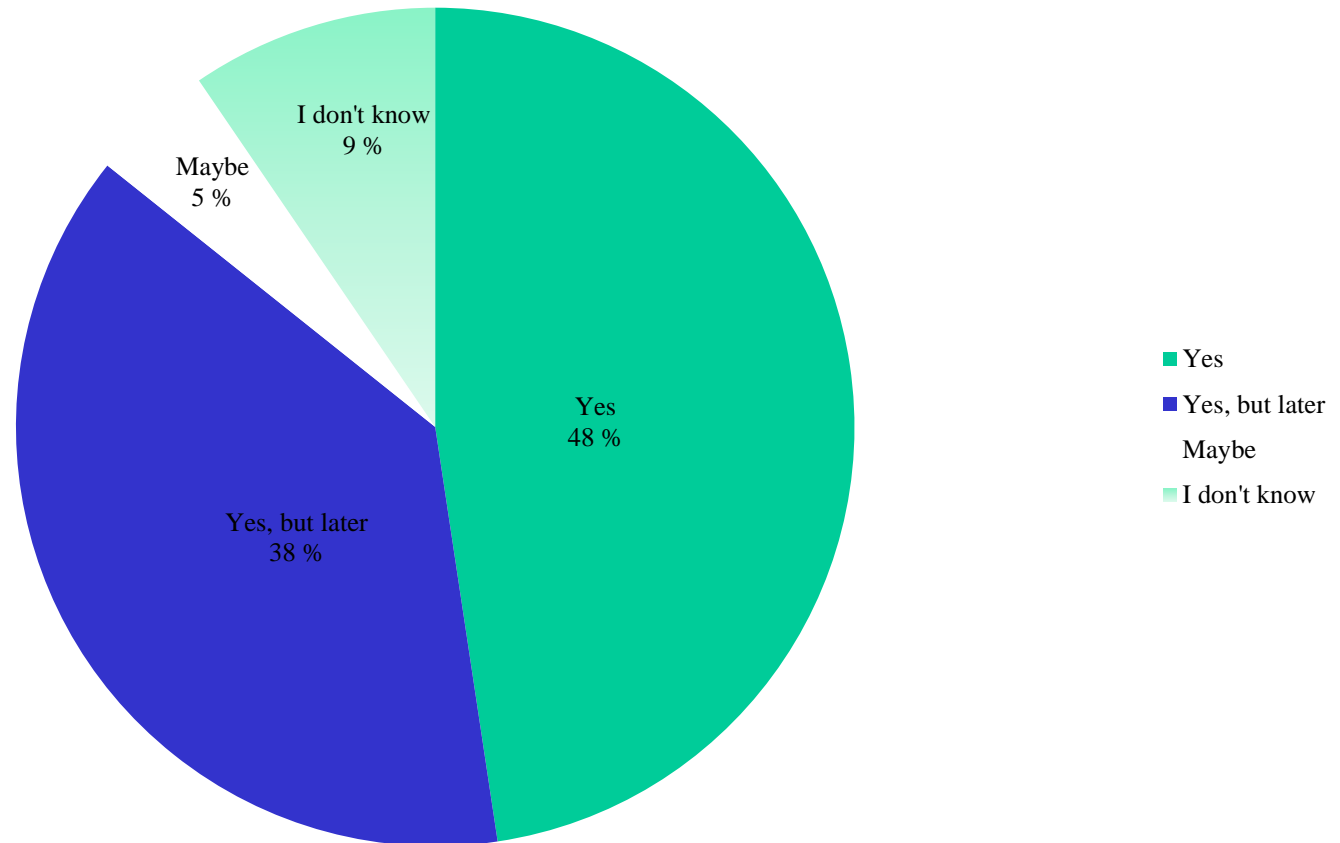


# End-Users Testing

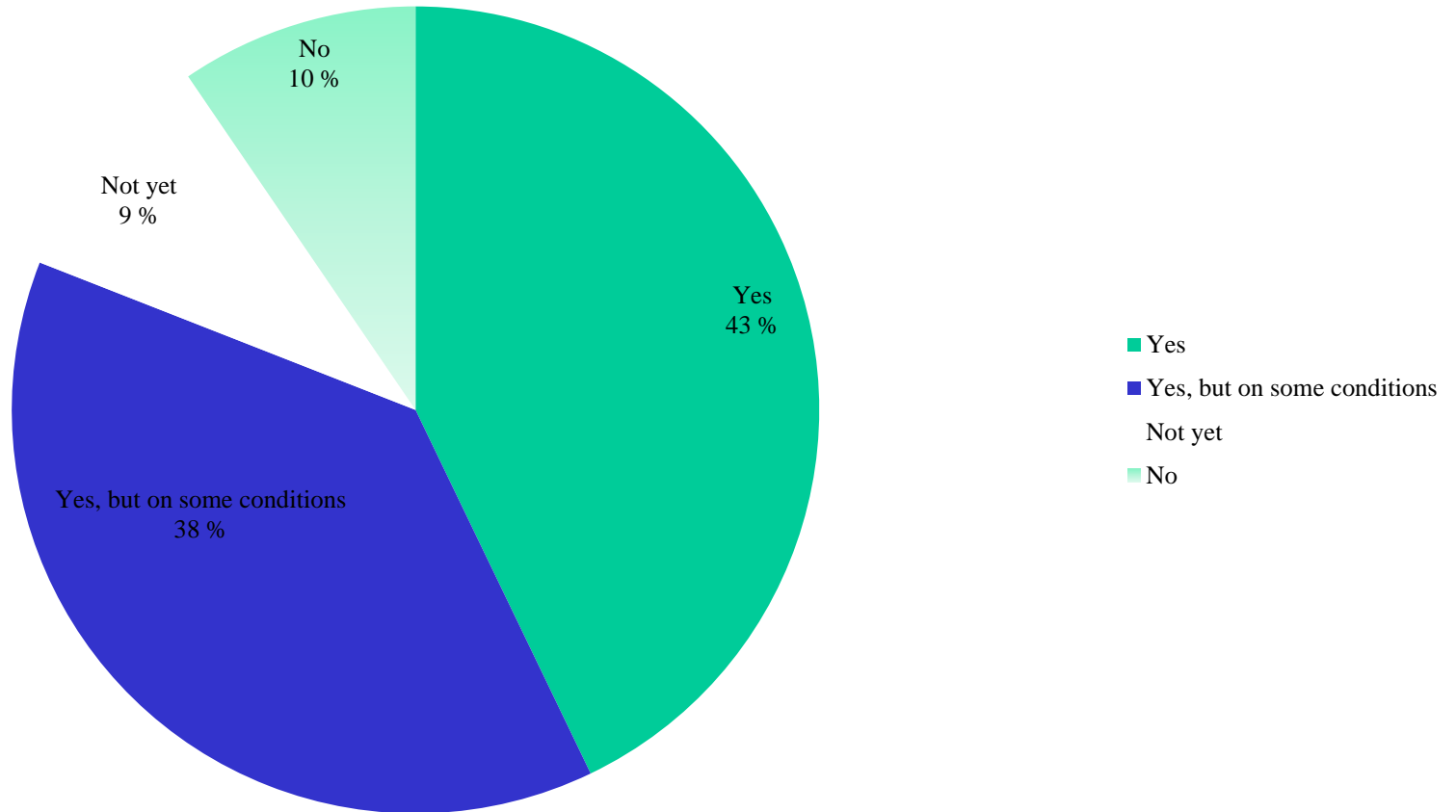
- 23 users
- Aged 23 – 74 years
- Average age is 56,4
- Duration is 8 months, few repeated trials
- Computer proficiencies: from computer illiterate to advanced user.



## Would you like to use the device?



## Would you be willing to pay for using the device?







## Good Morning, Vadym



9:42

18 September 2012

Raahe, Finland

Currently Partly Cloudy

10°

Feels like: 10°

Humidity: 76%

Tuesday

My Flat



PPO Services



Local  
Supermarket



My Memories



National News



Osuuspankki



Pizza



Hairdresser



My Radio



Local Restaurant



Calendar





# Help

←  19:00

Service



Voice guidance



Call for help



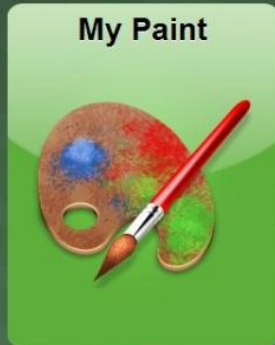
Invite assistance





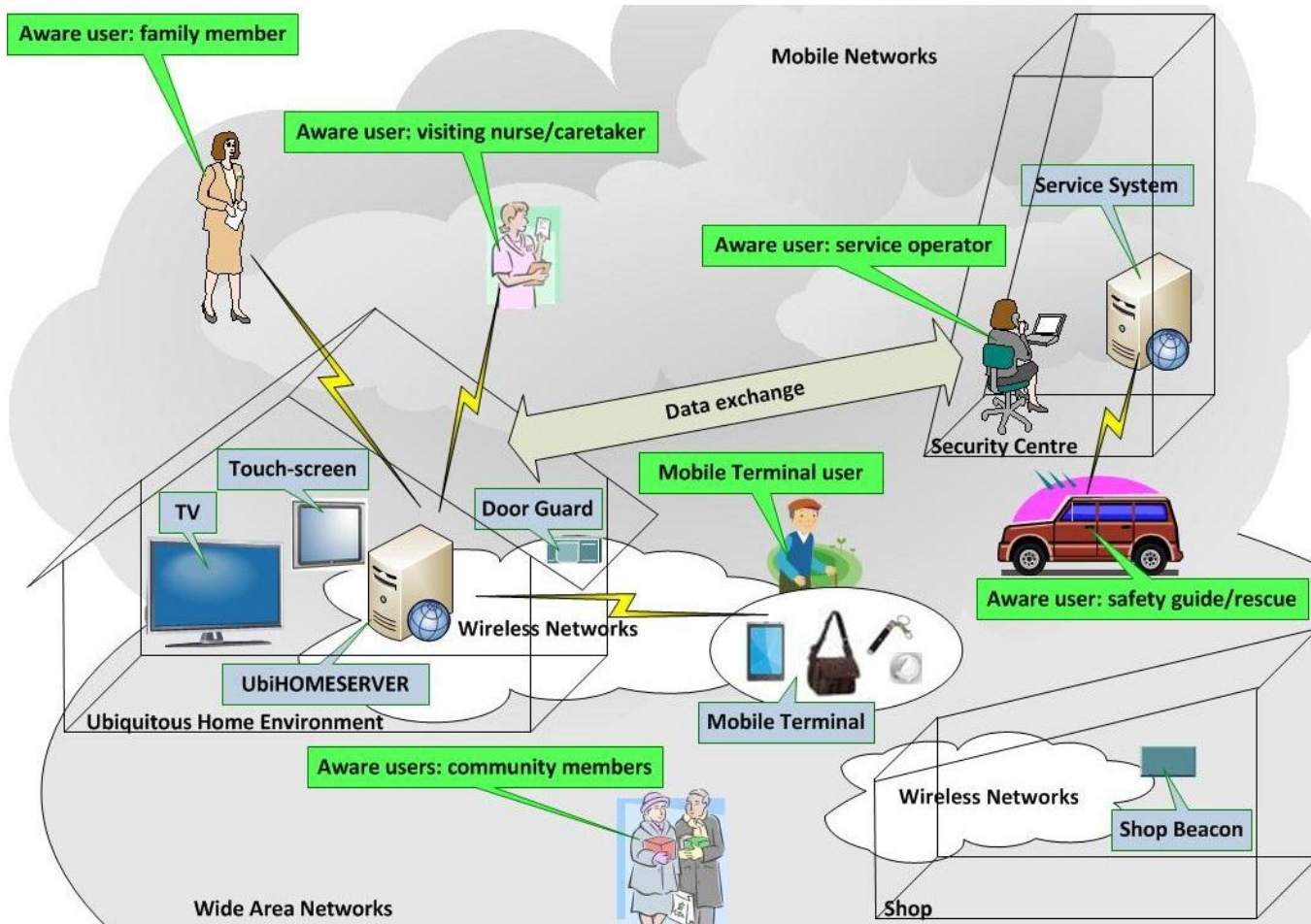
Would you like to restore the service?

← 9:27

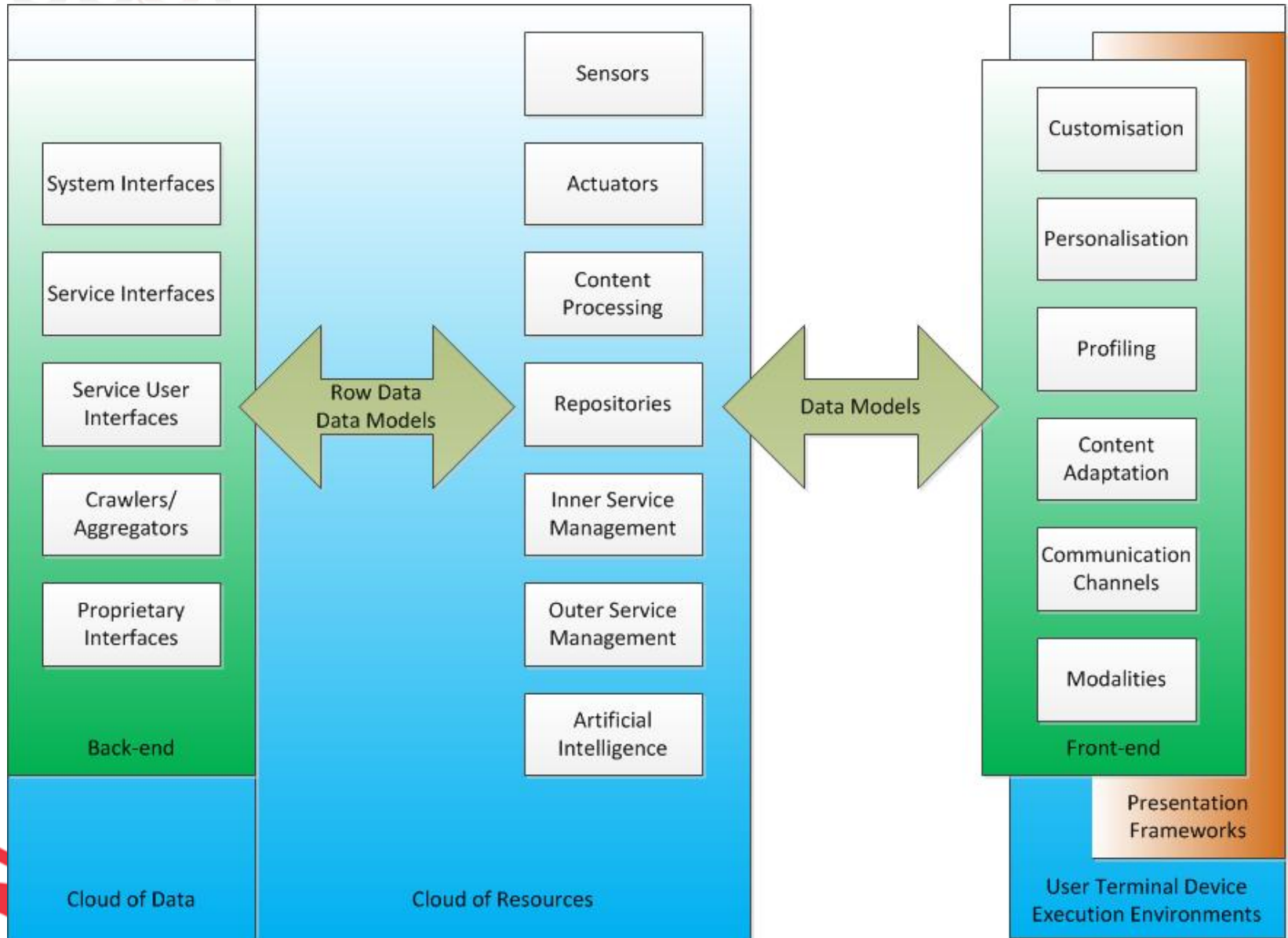




# Use-Case: Safety Navigation



Source: <http://www.uasjournal.fi/index.php/uasj/article/viewFile/1392/1318>





# What is a correlation?

**item**

**appointmentTime**

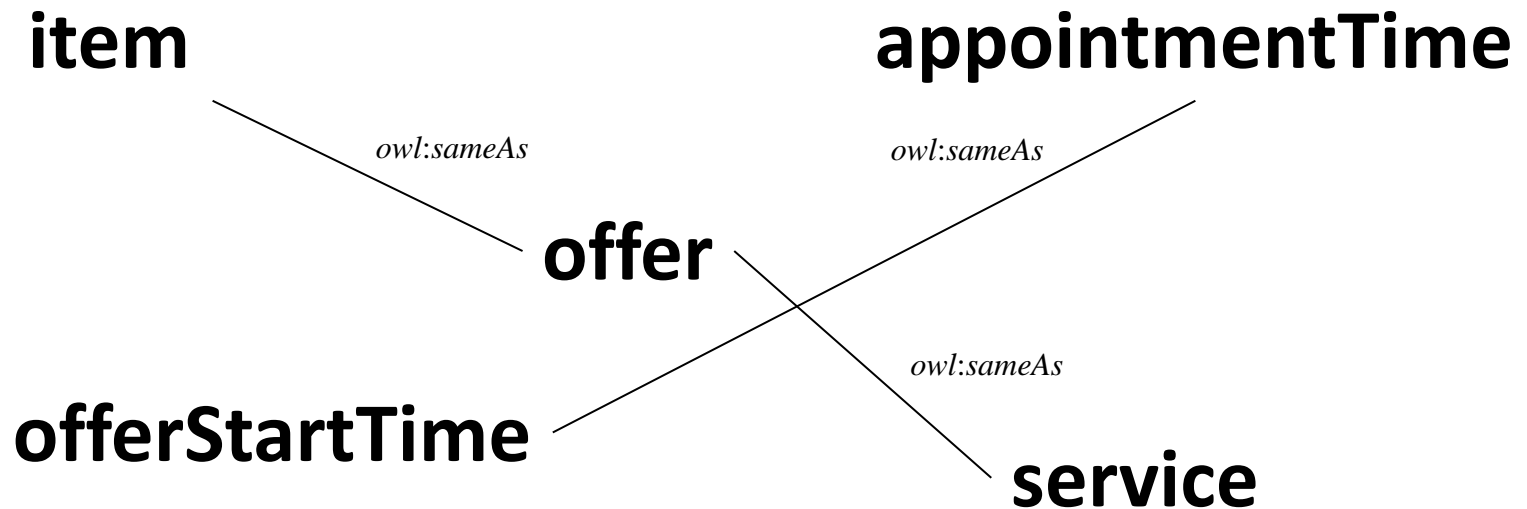
**offer**

**offerStartTime**

**service**



# Some have the same meaning!



# Thank you for your attention!

**Vadym Kramar**

[vadym.kramar@oamk.fi](mailto:vadym.kramar@oamk.fi)

Phone: +358 10 27 22555

Mobile: +358 44 327 0770

[www.pbol.org](http://www.pbol.org)

[finplatform.pbol.org](http://finplatform.pbol.org)

